

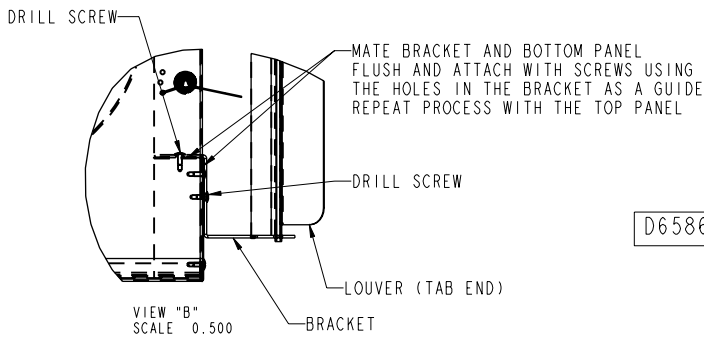
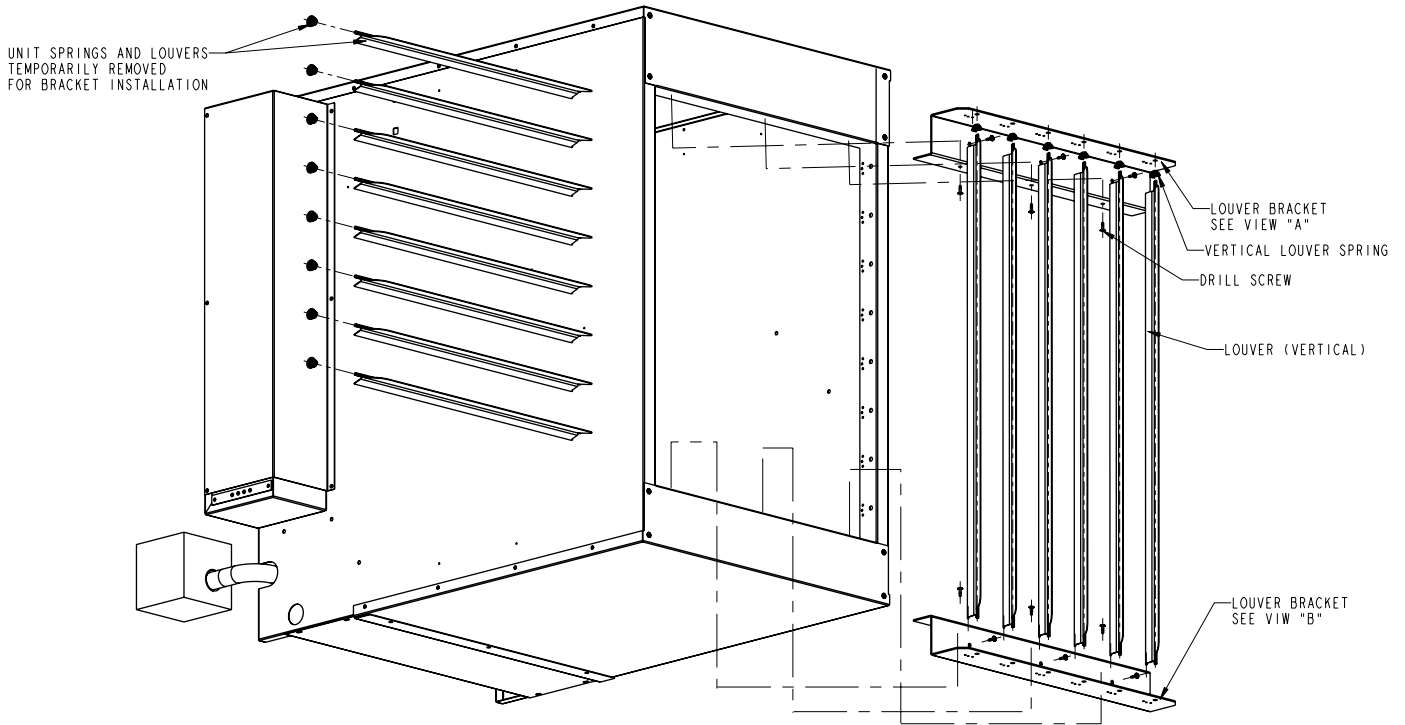
INSTALLATION INSTRUCTIONS

VERTICAL LOUVER KIT

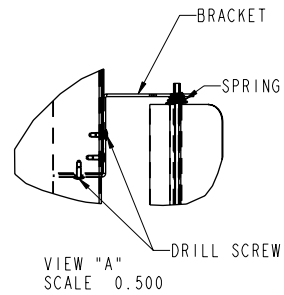
Tubular Gas Fired Unit Heaters

Units Sizes 100/400

ATTENTION: Read all instructions carefully in addition to your existing unit's installation manual. Heed all warnings included in the unit heater installation instruction.



D6586



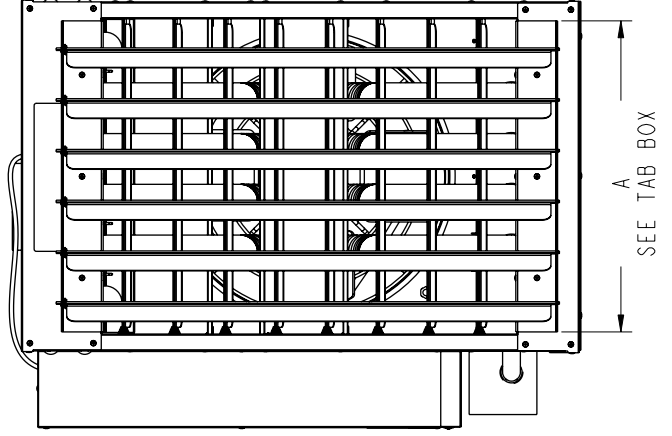
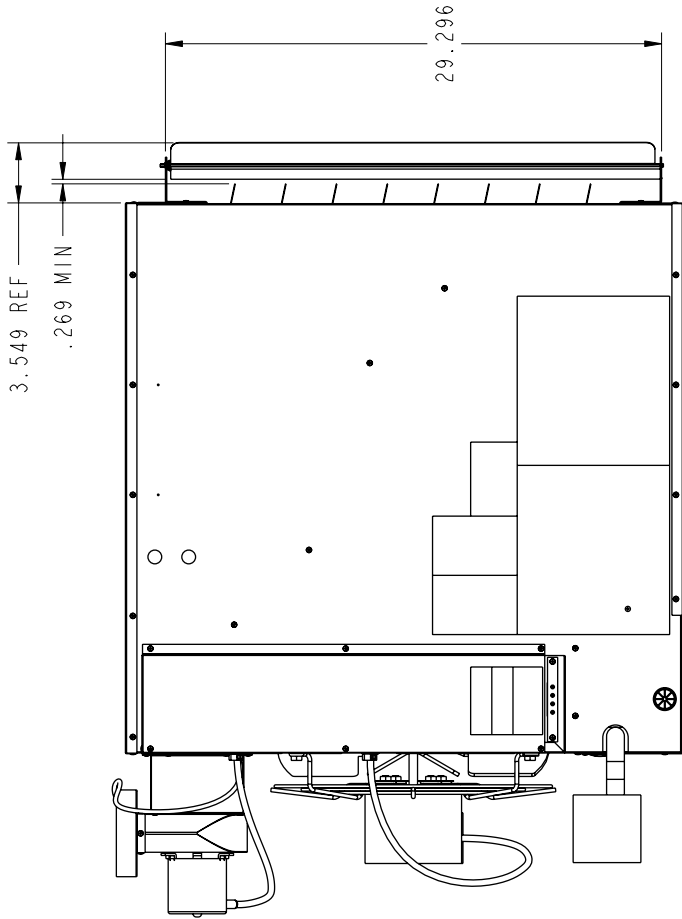
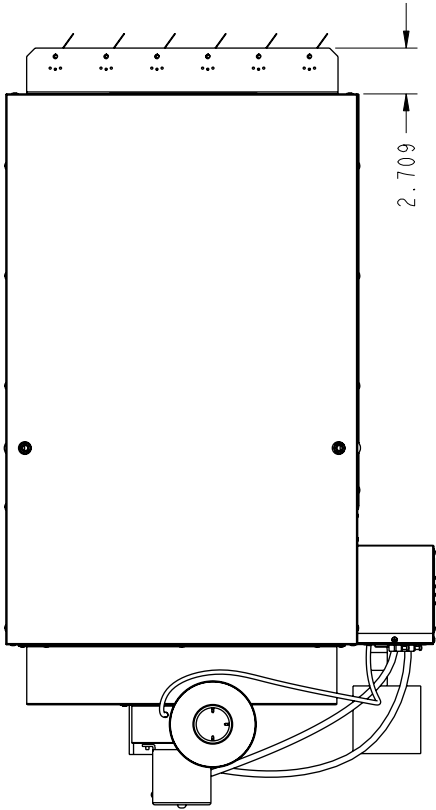
KIT CONTENTS

Part Description	Quantity Required Per Unit Capacity		
	100/150	175/250	300/400
Mounting Brackets	2	2	2
#10 Drill Screws	12	12	20
Cone Springs	6	10	16
Vertical Louvers	6	10	16

FIELD ASSEMBLY INSTRUCTIONS:

- STEP 1: TEMPORARILY REMOVE THE EXISTING HORIZONTAL LOUVERS AND SPRINGS. DO NOT DISCARD! THESE WILL BE REINSTALLED LATER.
- STEP 2: LOCATE AND ATTACH THE LOUVER BRACKETS TO THE TOP AND BOTTOM PANELS USING THE SUPPLIED DRILL SCREWS. SEE VIEWS "A" AND "B" FOR REFERENCE
- STEP 3: REINSTALL THE HORIZONTAL LOUVERS AND SPRINGS THAT WERE REMOVED IN STEP 1
- STEP 4: INSTALL THE SUPPLIED VERTICAL LOUVERS AND SPRINGS, ORIENTING THE LOUVERS FOR THE DESIRED LEFT/RIGHT AIR FLOW DIRECTION.

AS YOU ARE LOOKING AT THE FRONT OF THE UNIT, TO ANGLE THE AIR FLOW TO THE LEFT: INSTALL THE LOUVER END WITH THE TAB ON THE BOTTOM (SEE VIEW "B") AND THE SPRING (SEE VIEW "A") WILL BE INSTALLED AT THE TOP OF THE LOUVER. BE SURE THE TAB OF THE LOUVER IS INSERTED IN THE PREDRILLED HOLES. TO ANGLE THE AIR FLOW RIGHT THE TAB END OF THE LOUVER WILL BE AT THE TOP AND THE SPRING WILL BE INSTALLED AT THE BOTTOM



UNIT SIZE	"A"
100, 125, 150	18.385
175, 200, 250	30.385
300, 350, 400	48.385

D6585